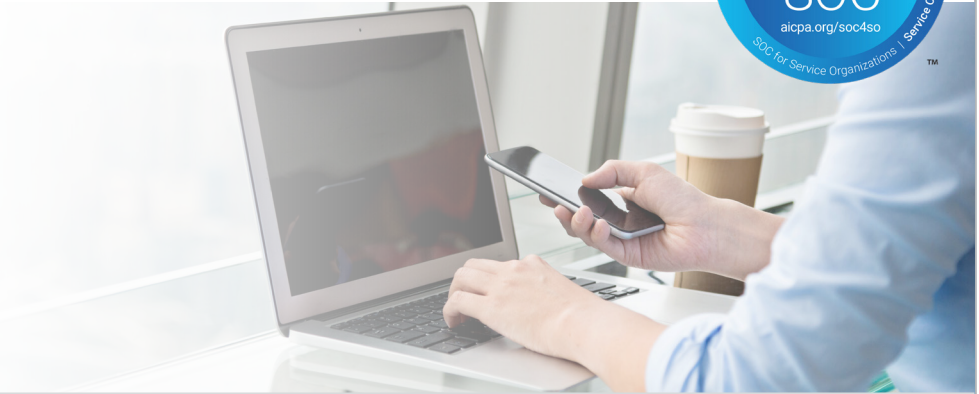


Accessing the InnovuLens™ Platform

User Technology Requirements



Before you access Innovu's solutions, please review the following technology requirements to ensure proper functionality.



If your organization employs a restrictive, whitelist firewall or web proxy, the following URLs will need to be allowed for you to access Innovu's portals:

- <http://www.innovu.com>
- <http://lens.innovu.com>
- <https://lens.innovu.com>
- <https://upload.innovu.com>



Using Google Chrome, version 50 or greater, allows you to experience the full functionality of the InnovuLens platform. We chose Google Chrome because it boasts an Internet-wide adoption rate of more than 70% (April 2016). It also has complete, cross-platform support, stable modern browser features, and continuous security testing and patching.

- Google Chrome > = Version 50
- Download: <https://www.google.com/chrome/browser/desktop/>
- Support: <https://goo.gl/8f5AIF>

Other Browsers: If you are unable to use Google Chrome, other modern web browsers can be used, though not all features and functions may operate as intended.

- Mozilla Firefox, version 46 or greater
- Microsoft Edge, version 25 or greater
- Microsoft Internet Explorer, version 11 or greater
- Safari, version 9.1 or greater.

Check with your IT department to see which browser you should download for your operating system.



Innovu makes every effort to protect your data. To prevent unauthorized account access and ensure positive user identification, Innovu employs the use of two-factor authentication on all solutions. Two-factor authentication requires the user to provide the following three pieces of information:

1	User Name	2	Password	3	Token Code
	<input type="text" value="bob.smith@company.com"/>		<input type="password" value="*****"/>		<input type="text" value="123456"/>
	Your user name is the first piece of information. It will be unique to you and not shared by any one else. In most cases, this will be your corporate email address.		The second piece of information is your password. When you log in for the first time, you will be prompted to create a strong password in accordance with Innovu's password standards.		The third piece of information is called a token code. This is a code that changes every 30 seconds. You can generate the token code using a mobile app called Google Authenticator or have one sent to a known smart phone via SMS Text Messaging.



Google Authenticator can be downloaded via Google play or the Apple App Store.



If you have any questions or issues, please contact your Innovu representative.